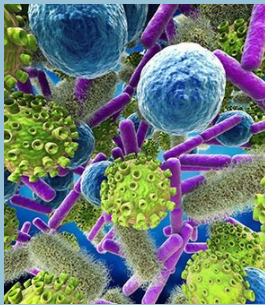


Why INVESTING in disease prevention is important

The levels of surface contamination by micro-organisms in vehicles are low in comparison to the concentrations on skin or in stools.

However, there is a risk of transmission even at low concentrations. Hayden et al. showed that touching the environment contaminated

with relatively low pathogen concentrations is associated with approxi-



mately the same risk of VRE acquisition on hands as touching an affected patient directly. Other in-vitro investigations on the transfer from surfaces to hands and vice versa corroborate these findings.

ONSITE AUTO DETAILING SERVICE

www.onsitewisconsin.com

Phone: (920) 277-3736

E-mail: gnunez@onsitewisconsin.com

ONSITE

Auto Detailing Service

**Infection Prevention and
Control of Epidemic Squad**



www.onsitewisconsin.com

(920) 277-3736

Onsite Auto Detailing Serves the Fox Valley and Green Bay Area

Sterilization and disinfection are essential components of infection-control procedures. There has been a surge of cleaning standards and mounting pressure for sterilized first responder and public transportation vehicles due to the Coronavirus (COVID-19).



Onsite Auto Detailing cleans vehicles using the CDC guidelines for Cleaning and Disinfecting Environmental Surfaces in Healthcare Facilities with EPA-registered hospital disinfectant according to the label's safety precautions and use directions.

We use CDC guidelines for disinfection and sterilization in healthcare facilities.(2008)

Price List

Police Squad	\$240.00
Fire Truck	\$280.00
Ambulance	\$480.00
Shuttle Bus	\$560.00
School Bus	\$640.00
Metro Bus	\$640.00
Luxury Bus	\$560.00
Coach Bus	\$880.00
Limousine	\$320.00



For more Information go...

www.onsitewisconsin.com

The process

Cleaning Process

Cleaning will be done beginning at an entrance to the vehicle, and moving towards the dirty area. This way, the clean personnel will remain clean as they enter the vehicle and stay in a "clean" area until they exit at the opposite end of the vehicle using mix EPA registered cleaning disinfectant per manufacturers' guidelines. All products will have instructions for cleaning and disinfection. Note the manufacturers' "dwell time" or the amount of time a surface must stay wet AFTER cleaning to achieve disinfection. Surfaces must be cleaned of organic materials, such as secretions, mucus, vomit, blood or other body fluids before disinfection or immersion.

The disinfectant recommended dilution

1:100 dilution of 5% sodium hypochlorite is the usual recommendation. Use 1 part bleach to 99 parts cold tap water (1:100 dilution) for disinfection of surfaces. Adjust ratio of bleach to water as needed to achieve appropriate concentration of sodium hypochlorite. For example, for bleach preparations containing 2.5% sodium hypochlorite, use twice as much bleach (i.e. 2 parts bleach to 98 parts water).

Application of the disinfectant solution

Disinfection by wiping of nonporous surfaces: a contact time of ≥ 10 minutes is recommended. Disinfection by immersion of items: a contact time of 30 minutes is recommended.